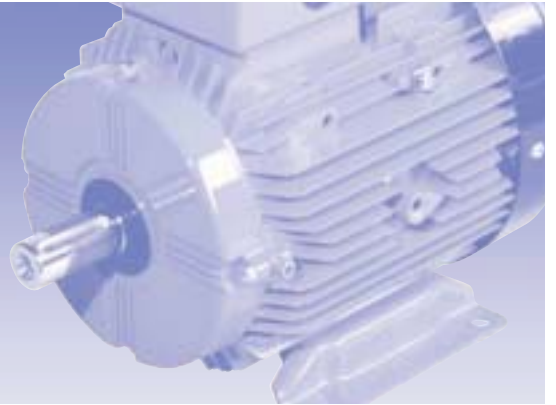


W high efficiency aluminium motors

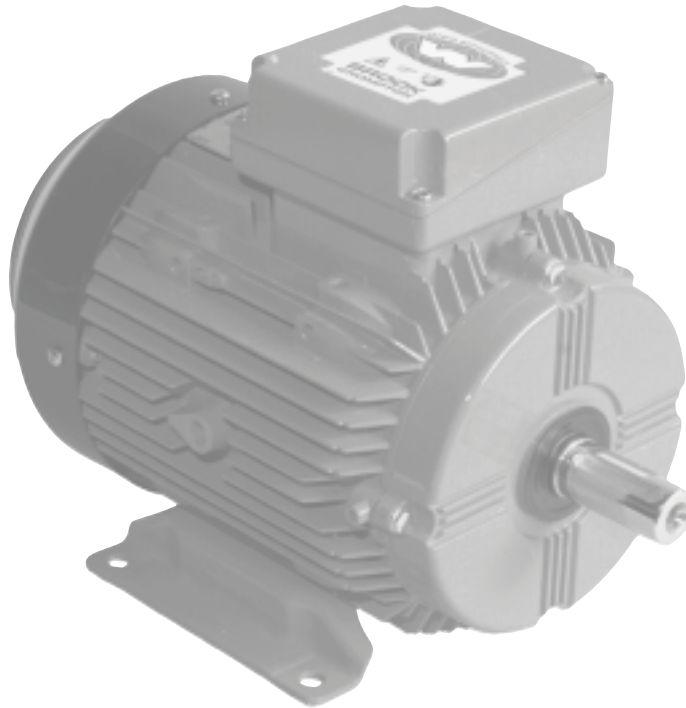


Frames 63 to 200L



**BROOK
CROMPTON**

W high efficiency aluminium motors 63 to 200L



Brook Crompton

Brook Crompton is a leading manufacturer of electric motors for the global industrial market, with motor solutions which benefit a wide range of customers.

Our products are used in almost every industrial activity including water treatment, building services, chemical/petrochemicals, general processing and manufacturing where they drive fans, pumps, compressors and conveyors, amongst other things.

Brook Crompton incorporates many well known names including Brook Motors, Crompton Parkinson, Electrodrives, Newman, Bull Electric and Hawker Siddeley Electric Motors.

We have extensive stocks of motors around the world, backed-up by a network of distributors, ensuring excellent local support wherever needed.

Quality assurance

Stringent quality procedures are observed from first design to finished product in accordance with the ISO9001 documented quality systems.

All of our factories have been assessed to meet these requirements, a further assurance that only the highest possible standards of quality are accepted.

W high efficiency range

The Brook Crompton aluminium motor range covers products with outputs as little as 0.07kW to 37kW in frame sizes W-DA63S to W-DA200L. They are widely used in a diverse range of applications from food and drink to water and sewage. From heating and ventilation to refrigeration. Some of the benefits of aluminium over cast iron, include, high resistance to corrosion and atmospheric attack (except chlorine, salt-laden or sulphuric acid) and the fact that aluminium is approximately one third the weight of cast iron.

Multi-Mount

By simply changing the position of the feet, the user is able to obtain right, left or top mounted terminal box positions and by removing the standard endshield you can change it for a flange or face version.

Benefits include:

- high efficiency for low running costs
- low noise levels
- Eurovoltage: 400 V \pm 10% 50 Hz
- dual frequency: 50 Hz and 60 Hz
- high power factors
- high torque with smooth acceleration and low current
- 2-year warranty
- IP55 protection

Efficiency

Brook Crompton are an approved manufacturer of ac electric motors within the UK Government's Enhanced Capital Allowance (ECA) scheme.

A wide range of single and multi-speed motors are included on the UK Energy Technology List. Please check the ECA scheme website: www.eca.gov.uk at time of purchase for current listing.

Standards and environment

Standards

Standards						
Motors of aluminium construction can be manufactured to the international standards listed below:						
Range	International	National standard				North American*
Standard	IEC	BS	VDE	DIN	NF	NEMA
Outputs	–	BS 5000 part 10	–	DIN 42673, DIN 42677	NF C51-110	MG1 part 10
Performance	IEC 60034-1	BS EN 60034-1	VDE 0530 part 1	–	NF C51-111	MG1 part 12
Dimensions	IEC 60072-1	BS 4999 part 141	–	DIN 42673, DIN 42677	NF C51-105, NF C51-120	MG1 part 4
Mounting	IEC 60034-7	BS EN 60034-7	–	DIN 42950	NF C51-117	MG1 part 4
Degrees of protection	IEC 60034-5	BS EN 60034-5	–	DIN 40050	NF C51-115	MG1-1.26B

standard BS and European specification motor complies
 optional
 BS specification motor complies except flange tolerances to IEC 60072-1 Annex C.1.7 Option 1
 European specification motors

Motors complying with IEC 60034-1 also comply with many of the national standards of other European countries, eg CEI 203 (Italy), NBN7 (Belgium), NEN 3173 (Netherlands), SEN 2601 01 (Sweden)

* Motors to NEMA standards have CSA approval and generally comply with Canadian (EEMAC) standards
 Motors can be supplied to CSA standard C390 (energy efficient) and USA 'EPAAct' legislation
 Motors certified by Underwriters Laboratories Inc (UL) can be supplied on request. The UL mark and certification number will be on each rating plate to show product compliance and certification.

Environment Enclosure

All motors have degrees of IP protection as defined in IEC 60034-5 (BS EN 60034 part 5).

European directives

Three European directives apply in varying degrees to ac induction motors. Brook Crompton comply in the following manner:

Motor cooling

Motors are cooled in accordance with BS EN 60034-6. The normal arrangement is IC411 (Totally Enclosed Fan Ventilated) via a fan mounted at the non-drive end. Alternative methods of cooling available on request.

Compliance with European directives applying to AC induction motors			
Directives	Low voltage (LV)	Machinery (MD)	Electromagnetic compatibility (EMC)
Reference numbers	73/23/EEC	89/392/EEC	89/336/EEC
	93/68/EEC	91/368/EEC	92/31/EEC
		93/44/EEC	93/68/EEC
		93/68/EEC	
Motor CE marked	Yes	No	No
Standards	EN 60034	Not applicable	EN 60034-1
Documentation for customers' technical file	Declaration of conformity	Certificate of incorporation	Statement ⁽¹⁾
Safety instructions with every motor	Yes	Yes	Yes
Comment	Relevant electrical equipment operating between 50 to 1000 volts AC	Statement ⁽²⁾	Component

⁽¹⁾ Motors operating from a correctly applied, sinusoidal (AC) supply meet the requirements of the EMC directive and are within the limits specified in standard EN 60034-1

⁽²⁾ When installed in accordance with our customer safety and installation and maintenance instructions, they can be put into service only when the machinery into which they are being incorporated, has been declared to be in conformity with the machinery directive in accordance with Article 4(2) and Annex IIB of that Directive (98/37/EEC)