

# T range motors

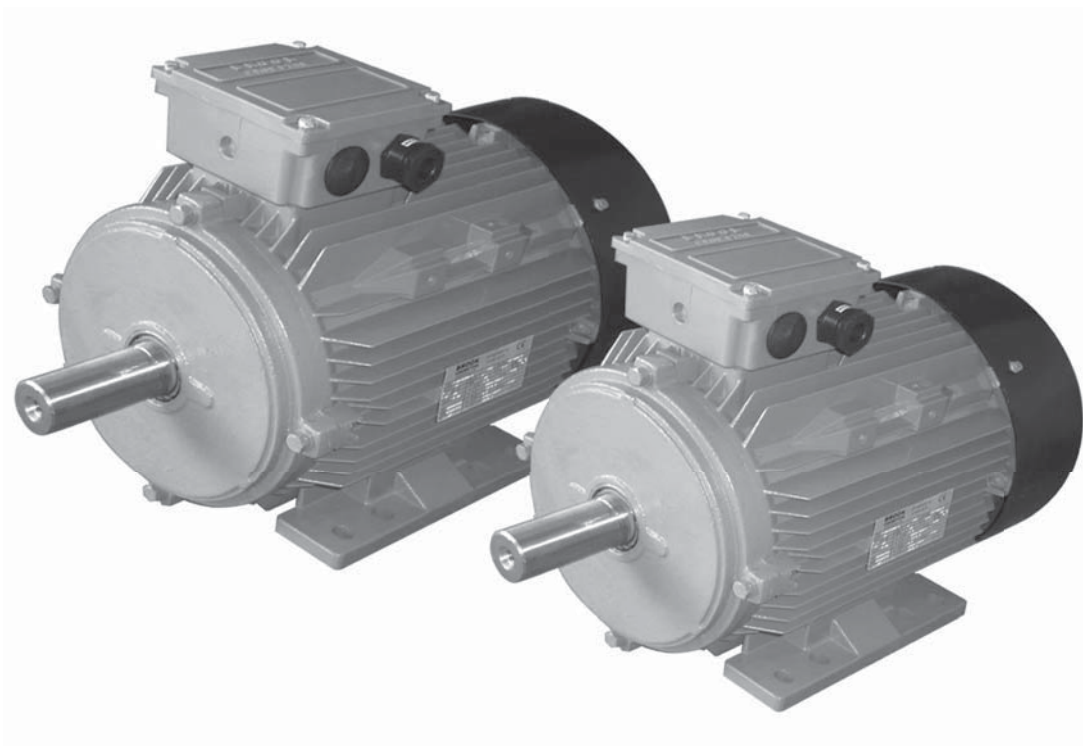


Frames 80 to 355



# T range motors

## 80 to 355



### Brook Crompton

Brook Crompton is a leading manufacturer of electric motors for the global industrial market.

Brook Crompton motors are used in almost every industrial activity including water treatment, building services, chemical/petrochemicals, general processing and manufacturing. They drive fans, pumps, compressors and conveyors.

Brook Crompton incorporates many well known names including Brook Motors, Crompton Parkinson, Electrodrives, Newman, Bull Electric and Hawker Siddeley Electric Motors.

There are extensive stocks of motors around the world, backed-up by a network of distributors, ensuring excellent local support wherever needed.

### Quality assurance

Stringent quality procedures are observed from first design to finished product in accordance with the ISO9001 documented quality systems.

All factories have been assessed to meet these requirements.

### T range

The Brook Crompton 'T' range is a high quality standard range of electric motors with a specification suitable for most industrial applications. It covers outputs from 0,06kW up to 250kW in frame sizes 80 to 355L.

### Benefits include:

- Full output range to meet your requirements
- Efficiencies are within the IE1 band (where applicable).
- Robust construction for long life
- Mountings: foot, flange, face or combination
- Multi-mount-aluminium range
- Multi-mount-cast iron 160 & 200 frame.
- Integrated feet 225 frame & above.
- Euro voltage: up to 3kW 230/400V; 4kW and above 400/690V
- Dual frequency (50 or 60Hz)
- IP55
- Metal fan cover
- Metric entries
- Thermistors fitted as standard
- NTN bearings
- Inverter duty